

Austin-Bergstrom International Airport

Aviation Activity Report

	01/2010	01/2009	Percent Change	01/2010 - 01/2010	01/2009 - 01/2009	Percent Change
<u>Passenger Activity</u>						
Domestic Enplaned Revenue	293,559	274,723	6.86	293,559	274,723	6.86
Domestic Deplaned Revenue	298,296	276,673	7.82	298,296	276,673	7.82
Domestic Through Revenue	0	0	0.00	0	0	0.00
International Enplaned Revenue	0	644	-100.00	0	644	-100.00
International Deplaned Revenue	0	636	-100.00	0	636	-100.00
Domestic Enplaned Non-Revenue	9,494	9,932	-4.41	9,494	9,932	-4.41
Domestic Deplaned Non-Revenue	8,677	9,290	-6.60	8,677	9,290	-6.60
International Enplaned Non-Revenue	0	26	-100.00	0	26	-100.00
International Deplaned Non-Revenue	0	17	-100.00	0	17	-100.00
South Terminal-Intl Enplaned Revenue	0	1,854	-100.00	0	1,854	-100.00
South Terminal-Intl Deplaned Revenue	0	2,362	-100.00	0	2,362	-100.00
South Terminal-Intl Through Revenue	0	0	0.00	0	0	0.00
South Terminal-Intl Enplaned Non-Revenue	0	0	0.00	0	0	0.00
South Terminal-Intl Deplaned Non-Revenue	0	0	0.00	0	0	0.00
South Terminal-Intl Through Non-Revenue	0	0	0.00	0	0	0.00
Passenger Totals	610,026	576,157	5.88	610,026	576,157	5.88

CURRENT PASSENGER RECORD = 869,308

RECORD SET = JUNE 2008

Aircraft Operations

Air Carrier	7,442	7,912	-5.94	7,442	7,912	-5.94
Commuter & Air Taxi	1,366	1,279	6.80	1,366	1,279	6.80
Military	741	273	171.43	741	273	171.43
General Aviation						
Itinerant	4,171	4,604	-9.40	4,171	4,604	-9.40
Local	384	134	186.57	384	134	186.57
Total G.A.	4,555	4,738	-3.86	4,555	4,738	-3.86
Total Operations	14,104	14,202	-0.69	14,104	14,202	-0.69

Austin-Bergstrom International Airport

Aviation Activity Report

	01/2010	01/2009	Percent Change	01/2010 - 01/2010	01/2009 - 01/2009	Percent Change
<u>Cargo Activity</u>						
Mail						
Domestic Enplaned Mail	237,793	148,919	59.68	237,793	148,919	59.68
Domestic Deplaned Mail	383,191	486,097	-21.17	383,191	486,097	-21.17
International Enplaned Mail	0	0	0.00	0	0	0.00
International Deplaned Mail	0	0	0.00	0	0	0.00
South Terminal-Intl Enplaned Mail	0	0	0.00	0	0	0.00
South Terminal-Intl Deplaned Mail	0	0	0.00	0	0	0.00
Mail Totals	620,984	635,016	-2.21	620,984	635,016	-2.21
Cargo						
Domestic Enplaned Cargo	5,768,072	6,160,314	-6.37	5,768,072	6,160,314	-6.37
Domestic Deplaned Cargo	5,039,696	5,079,497	-0.78	5,039,696	5,079,497	-0.78
International Enplaned Cargo	415,537	281,760	47.48	415,537	281,760	47.48
International Deplaned Cargo	0	0	0.00	0	0	0.00
South Terminal-Intl Enplaned Cargo	0	0	0.00	0	0	0.00
South Terminal-Intl Deplaned Cargo	0	0	0.00	0	0	0.00
Cargo Totals	11,223,305	11,521,571	-2.59	11,223,305	11,521,571	-2.59
Belly Freight						
Domestic Enplaned Belly Freight	693,207	757,597	-8.50	693,207	757,597	-8.50
Domestic Deplaned Belly Freight	530,543	577,197	-8.08	530,543	577,197	-8.08
International Enplaned Belly Freight	0	0	0.00	0	0	0.00
International Deplaned Belly Freight	0	0	0.00	0	0	0.00
South Terminal-Intl Enplaned Belly Frt	0	0	0.00	0	0	0.00
South Terminal-Intl Deplaned Belly Frt	0	0	0.00	0	0	0.00
Belly Freight Totals	1,223,750	1,334,794	-8.32	1,223,750	1,334,794	-8.32
Cargo Totals (Mail, Cargo, Belly Freight)	13,068,039	13,491,381	-3.14	13,068,039	13,491,381	-3.14

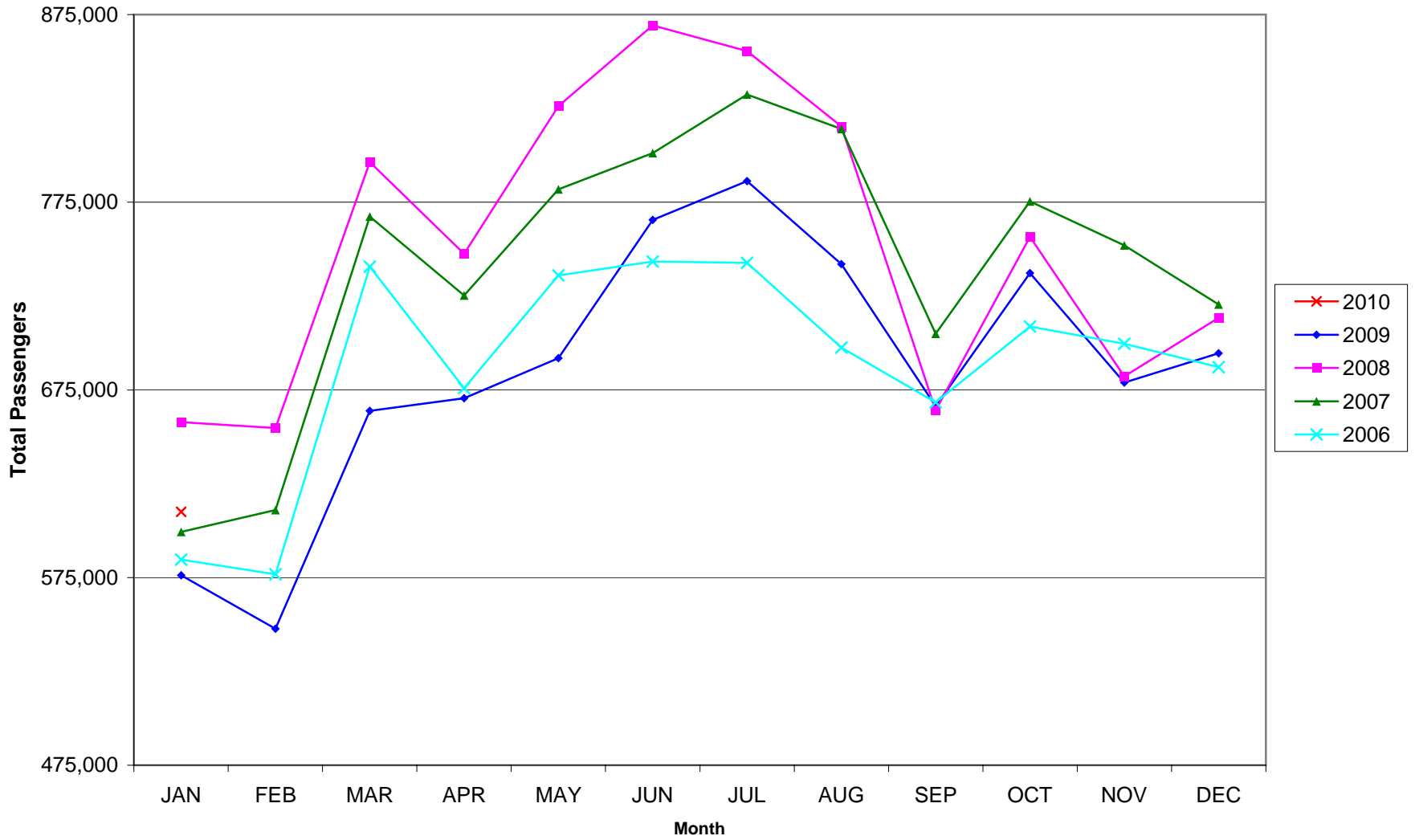
CURRENT CARGO RECORD = 40,215,518

RECORD SET = MARCH 2001

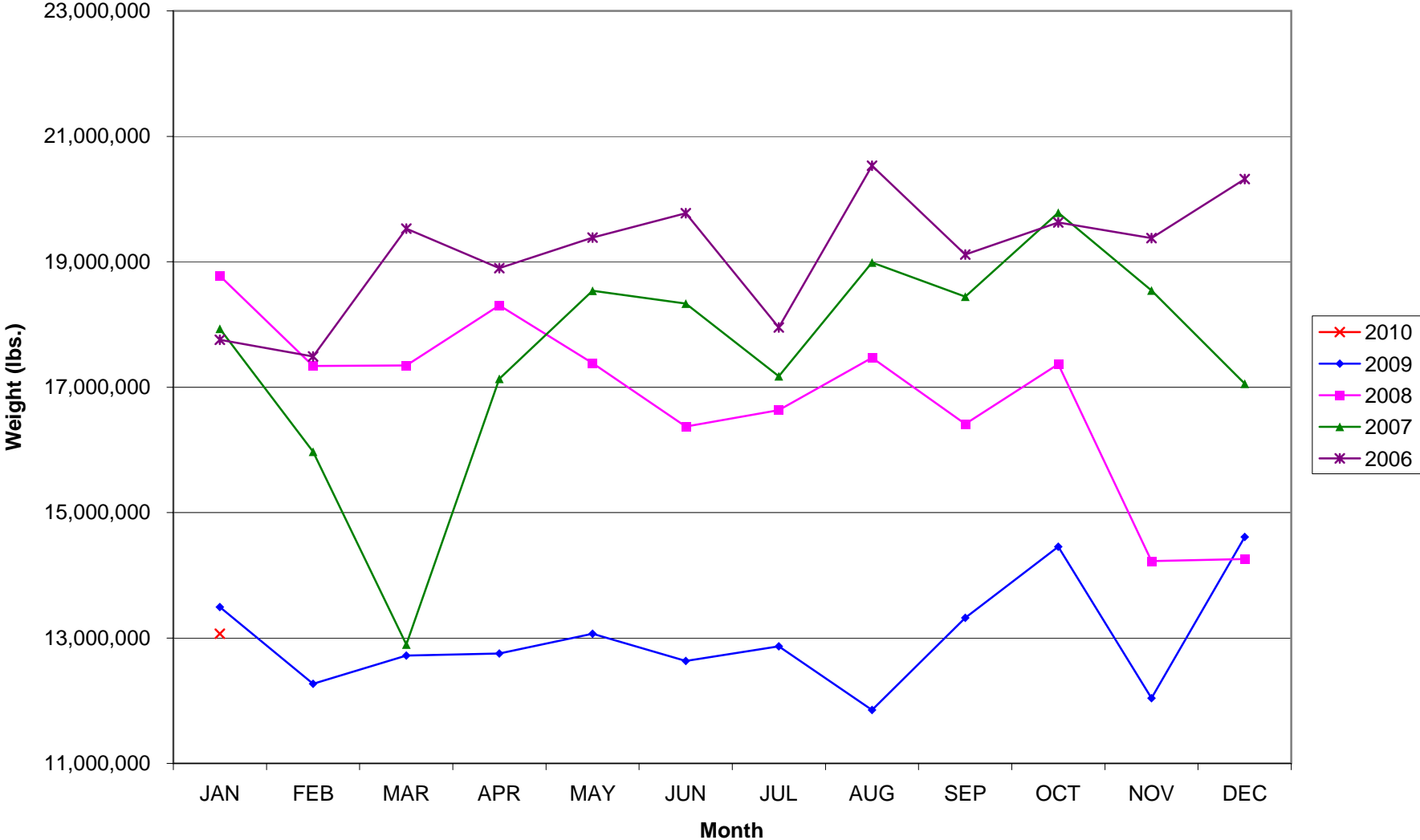
AUS – Airline Codes
January 2010

<u>Code</u>	<u>Carrier</u>
AS	Alaska Airlines, Inc.
G4	Allegiant Air
AA	American Airlines, Inc.
XP	Casino Express Airways
RP	Chautauqua Airlines, Inc.
CO	Continental Airlines
DL	Delta Airlines
F9	Frontier Airlines
B6	JetBlue Airways Corp.
YV	Mesa Airlines Inc – DIP
S5	Shuttle America Corp. (Delta Connection)
OO	SkyWest Airlines, Inc.
WN	Southwest Airlines
UA	United Airlines, Inc. (GoJet Airlines dba United Express)
V2	Vision Airlines

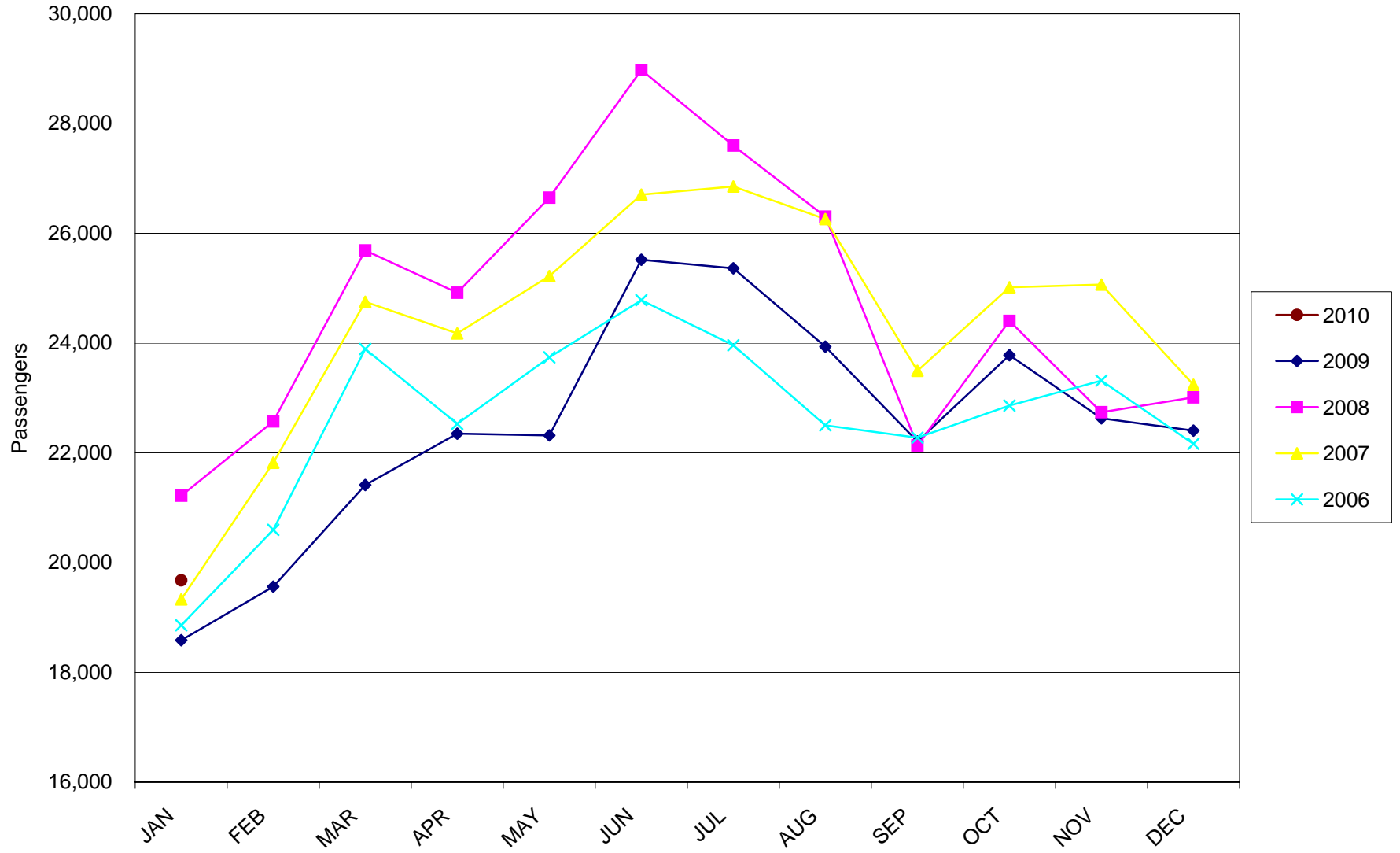
AUSTIN PASSENGER TRAFFIC



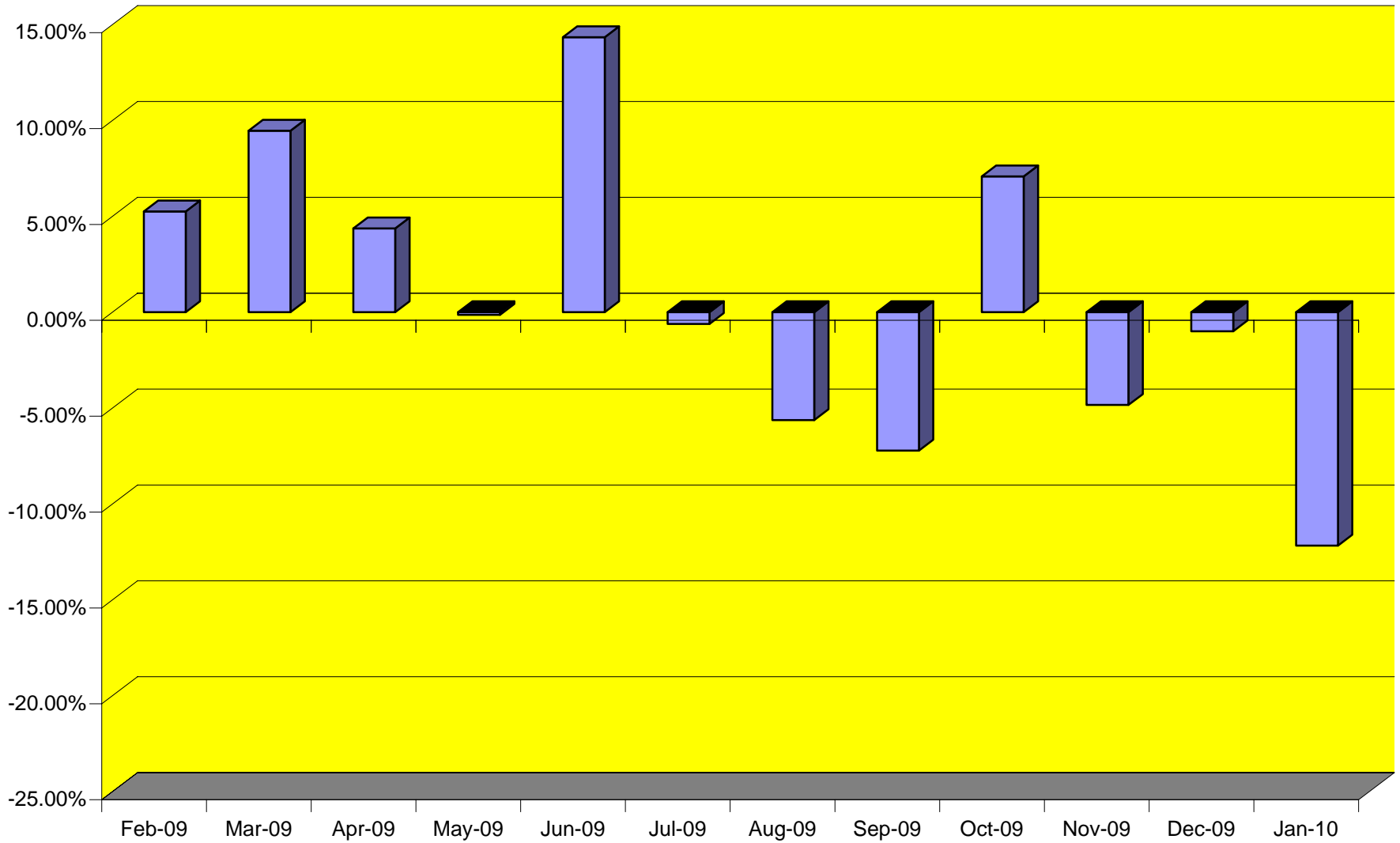
TOTAL CARGO POUNDAGE - AUSTIN, TEXAS



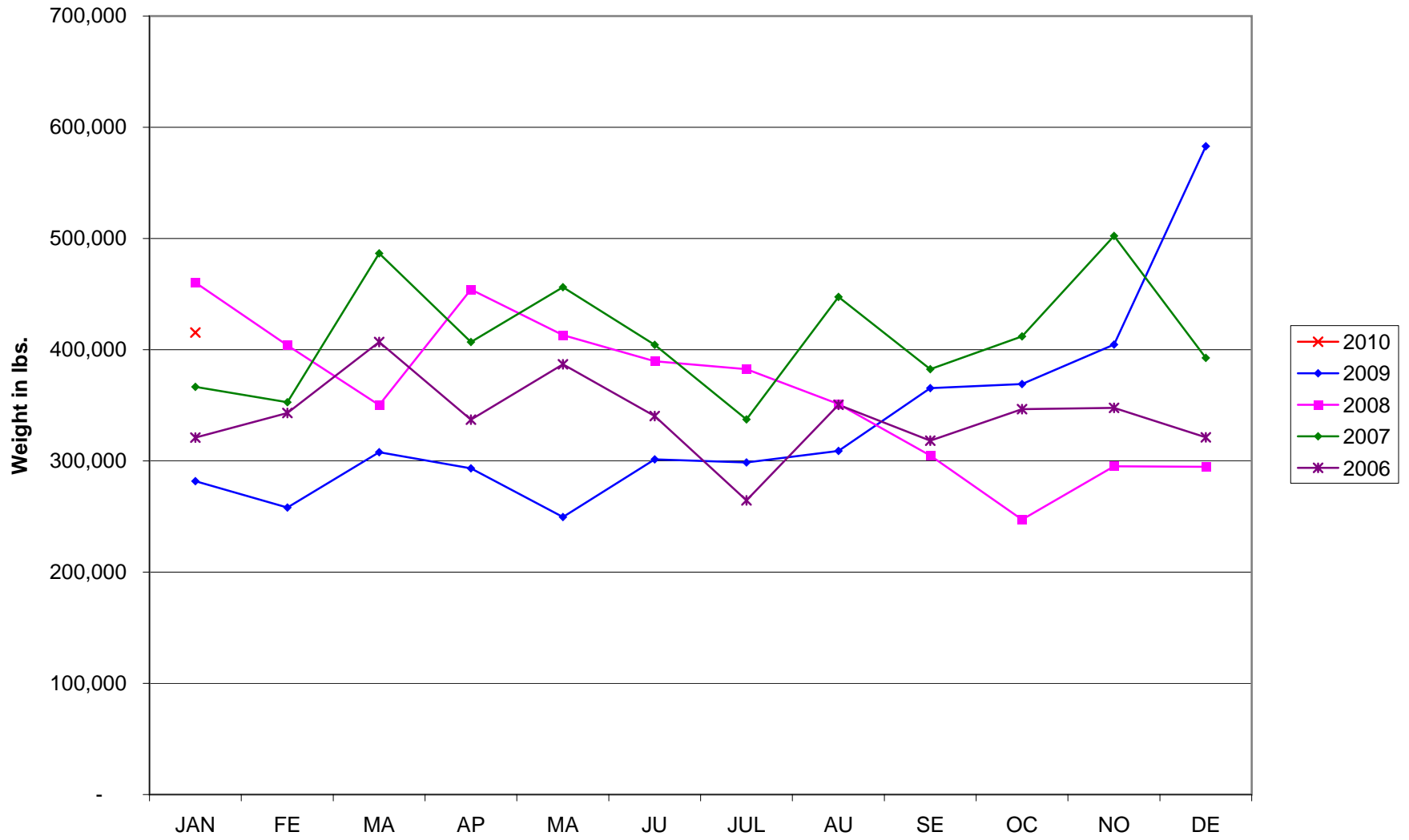
Average Daily Passengers



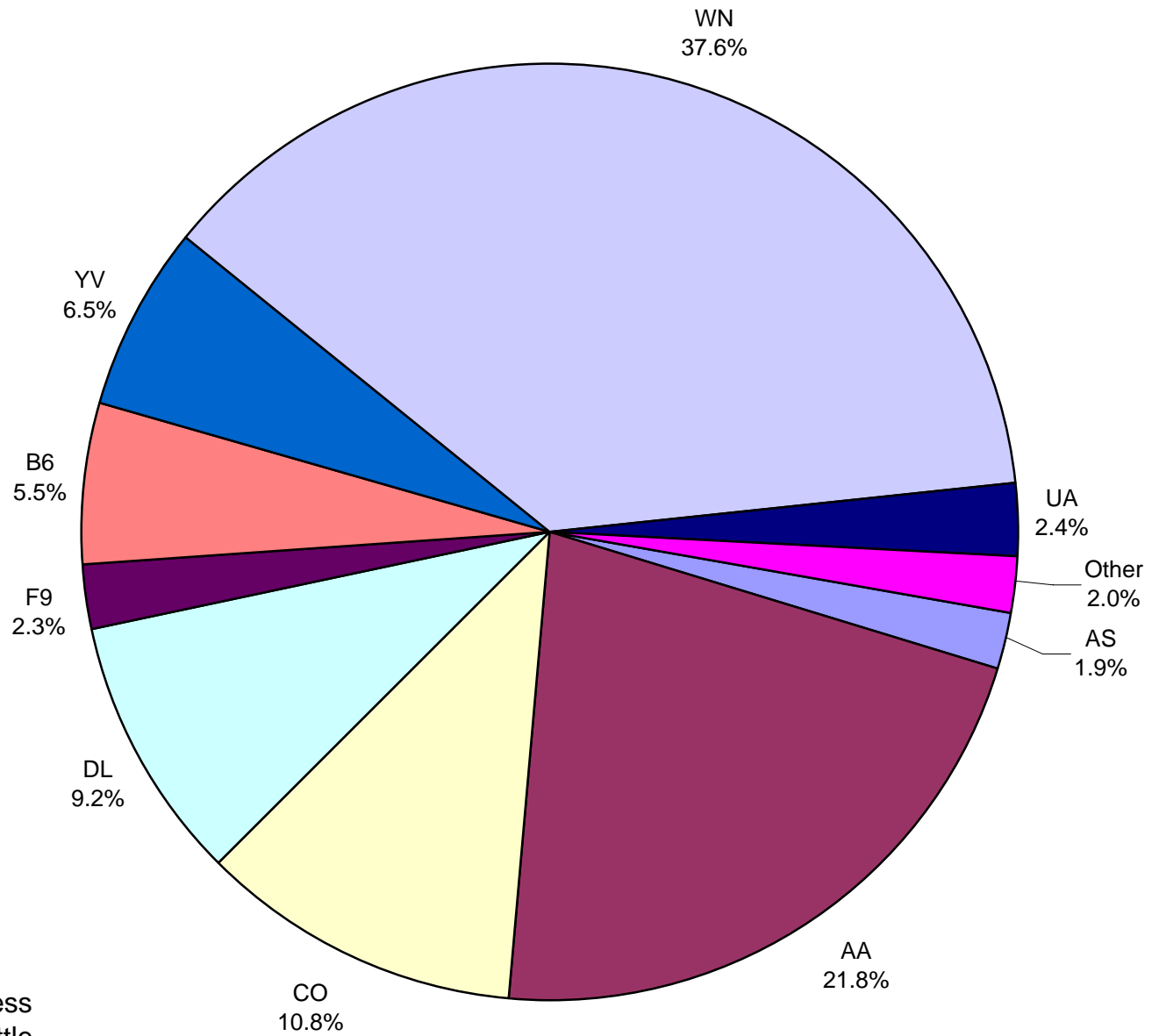
Monthly % Change in Average Daily Passengers



History of International Air Cargo



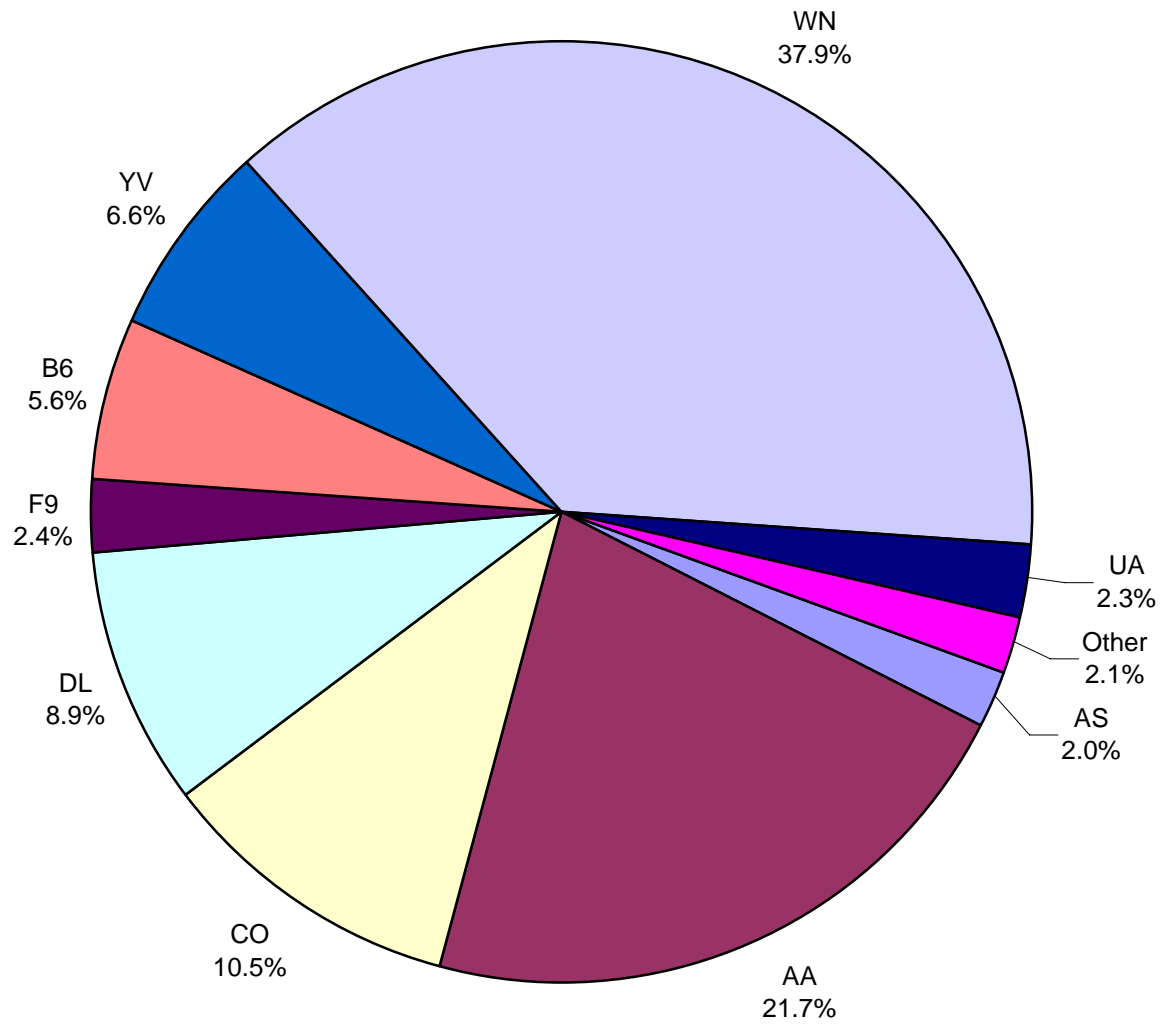
Total Passengers January 2010



Other = Allegiant Air, Casino Express Airways, Chautauqua Airlines, Shuttle America, SkyWest Airlines and Vision Airlines.

Note: United Airlines percentage includes sub-contractors.

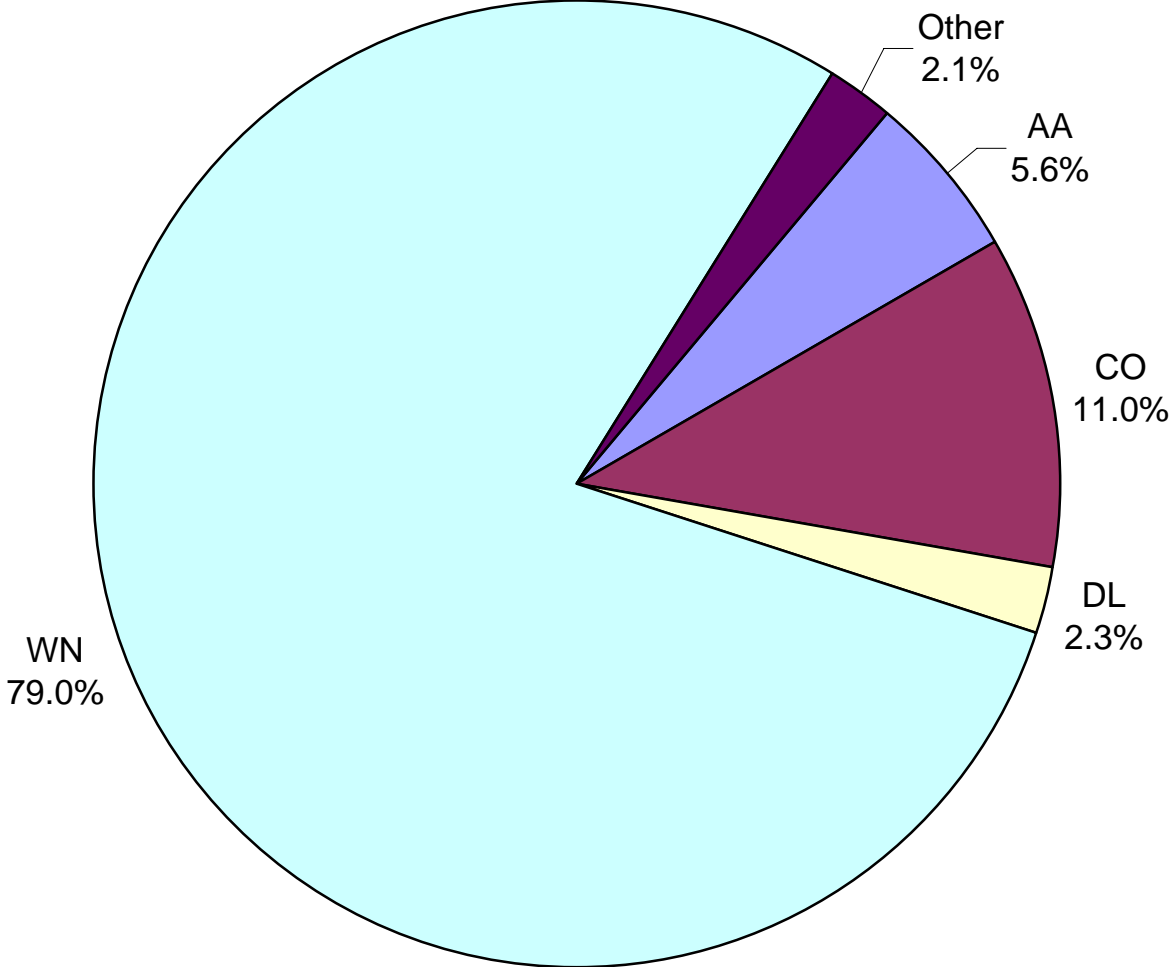
**All Passenger Carriers
Enplaned Revenue Passengers
January 2010**



Other = Allegiant Air, Casino Express Airways, Chautauqua Airlines, Shuttle America, SkyWest Airlines and Vision Airlines.

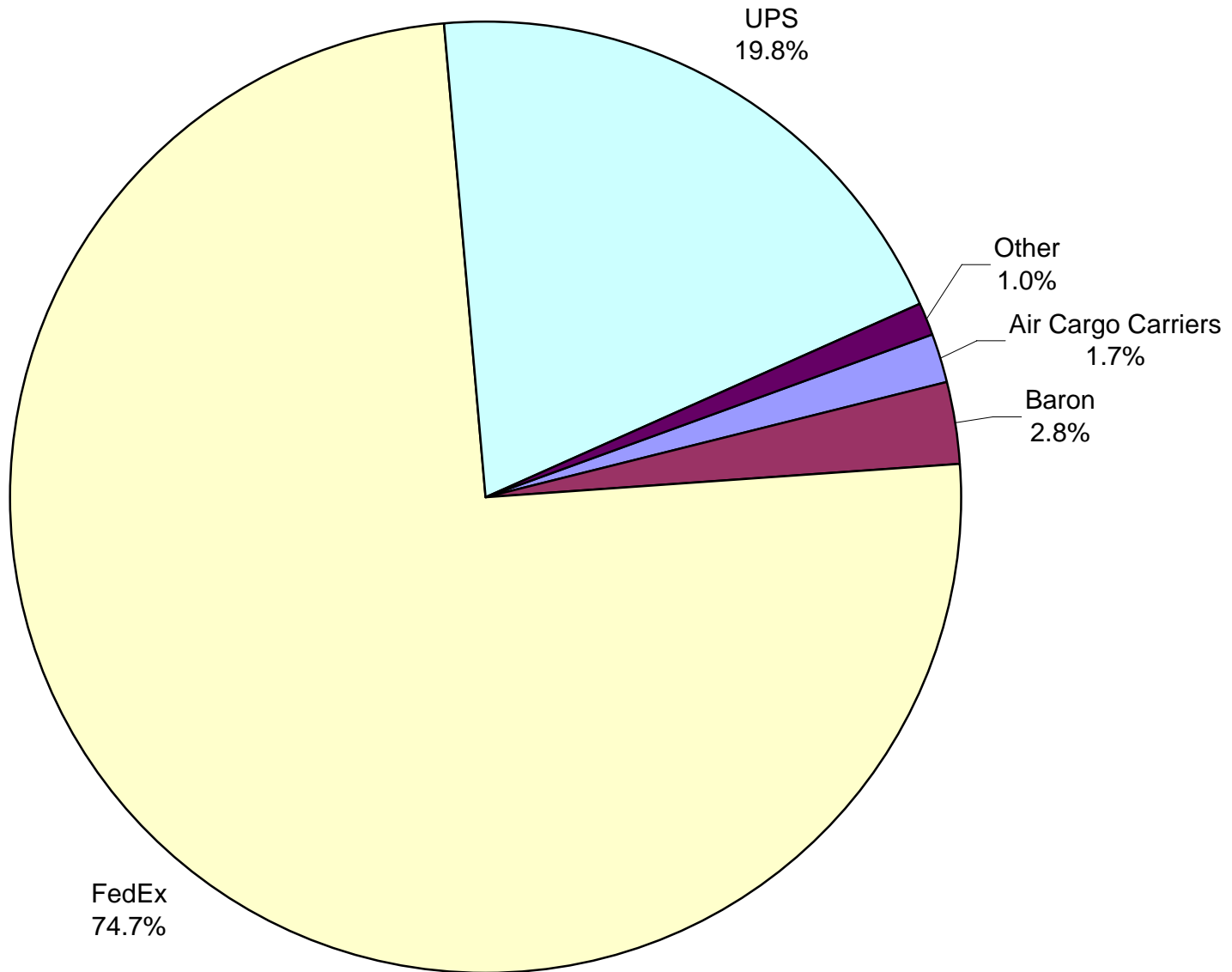
Note: United Airlines percentage includes sub-contractors.

**AUS Belly Freight Market Shares
January 2010**



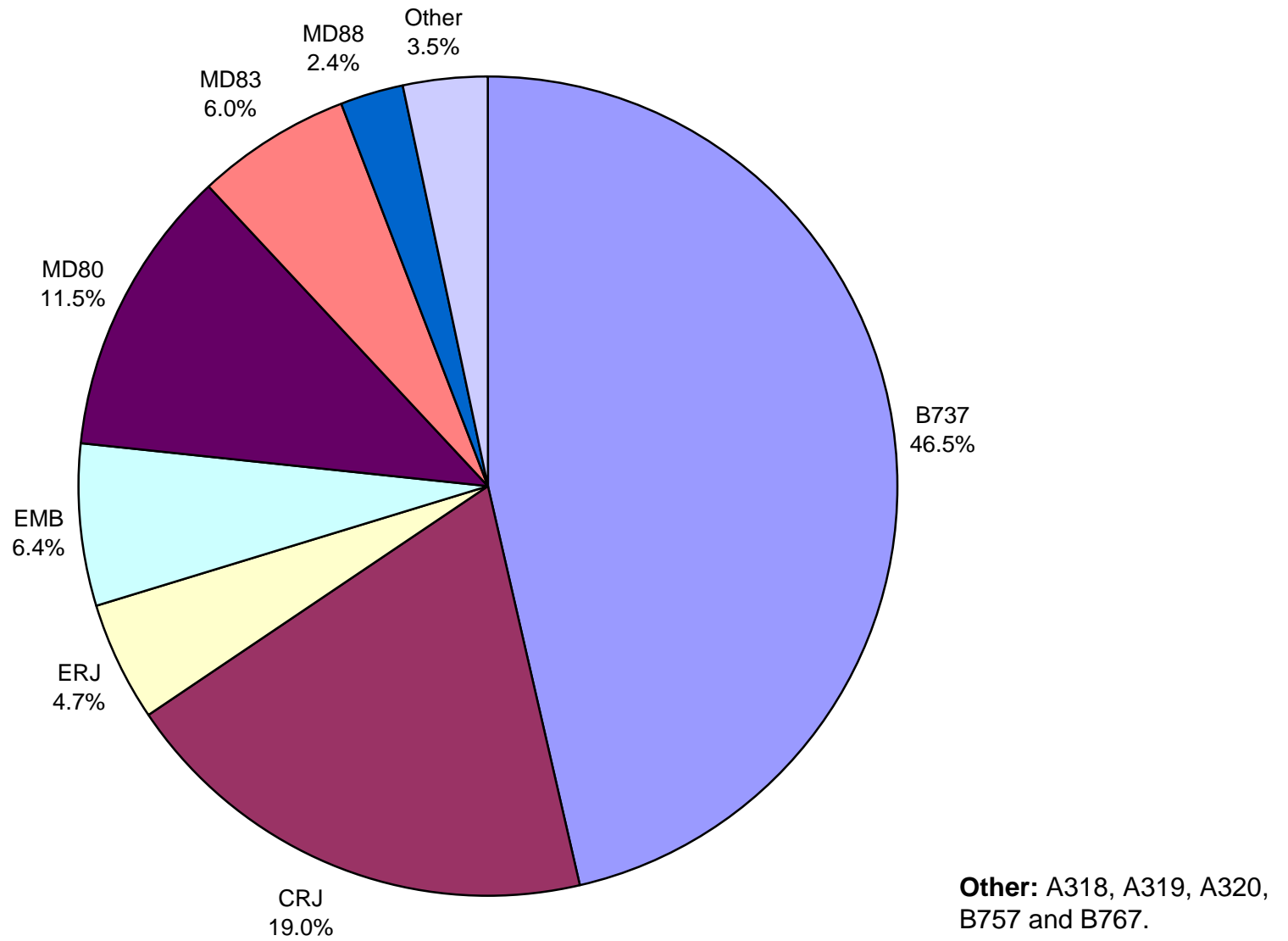
Other = Alaska Airlines, Frontier Airlines, United Airlines, and Mesa Airlines.

**Air Cargo Market Shares
January 2010**

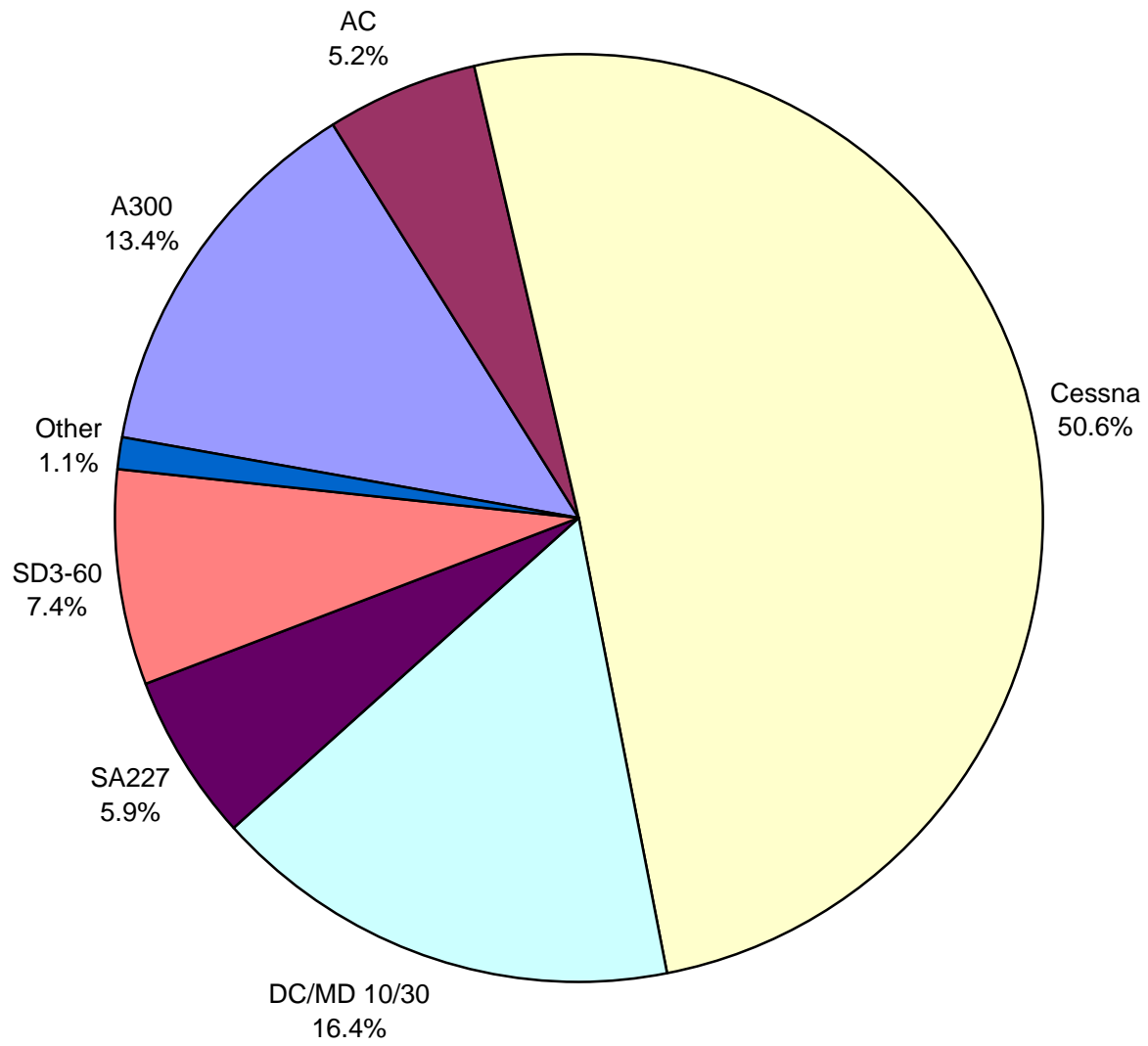


Other: Ameriflight, Kalitta Air, Lone Star Overnight and Martinaire Partners.

**AUS Scheduled Passenger Aircraft Fleet Mix
January 2010**



**AUS Scheduled Cargo Aircraft Fleet Mix
January 2010**



**Other: B-727, B757,
MD-11.**

Austin-Bergstrom International Airport

PAX Detail Report - January, 2010

Company	01/2010	01/2009	Period		YTD 2010	YTD 2009	YTD		2010 Share	2009 Share	Share Diff
			Difference	Change			Difference	Change			
Aeroenlaces Nacionales S.A. DE C.V./vivaAerobus	0	4,216	-4,216	-100.0	0	4,216	-4,216	-100.0	0.0	0.7	-0.7
Alaska Airlines, Inc. - Non-Signatory Operating Agreement	11,815	0	11,815	0.0	11,815	0	11,815	0.0	1.9	0.0	1.9
Allegiant Air	282	180	102	56.7	282	180	102	56.7	0.0	0.0	0.0
American Airlines, Inc	133,013	131,839	1,174	0.9	133,013	131,839	1,174	0.9	21.8	22.9	-1.1
Atlantic Southeast Airlines, Inc.	0	5,414	-5,414	-100.0	0	5,414	-5,414	-100.0	0.0	0.9	-0.9
Casino Express Airways	147	296	-149	-50.3	147	296	-149	-50.3	0.0	0.1	0.0
Chautauqua Airlines Inc.	1,914	0	1,914	0.0	1,914	0	1,914	0.0	0.3	0.0	0.3
Continental Airlines	66,194	64,673	1,521	2.4	66,194	64,673	1,521	2.4	10.9	11.2	-0.4
Delta Airlines	56,283	16,314	39,969	245.0	56,283	16,314	39,969	245.0	9.2	2.8	6.4
Delta Airlines/Pinnacle	0	6,730	-6,730	-100.0	0	6,730	-6,730	-100.0	0.0	1.2	-1.2
Frontier Airlines	14,099	14,220	-121	-0.9	14,099	14,220	-121	-0.9	2.3	2.5	-0.2
GoJet Airlines d/b/a United Express	8,098	6,064	2,034	33.5	8,098	6,064	2,034	33.5	1.3	1.1	0.3
JAZZ Air LP	0	1,323	-1,323	-100.0	0	1,323	-1,323	-100.0	0.0	0.2	-0.2
JetBlue Airways Corporation	33,313	35,284	-1,971	-5.6	33,313	35,284	-1,971	-5.6	5.5	6.1	-0.7
Mesa Airlines Inc - DIP	33,655	0	33,655	0.0	33,655	0	33,655	0.0	5.5	0.0	5.5
Mesa Airlines Inc. Pre Bankruptcy	5,868	37,518	-31,650	-84.4	5,868	37,518	-31,650	-84.4	1.0	6.5	-5.5
Northwest Airlines	0	13,904	-13,904	-100.0	0	13,904	-13,904	-100.0	0.0	2.4	-2.4
Pace Airlines	0	122	-122	-100.0	0	122	-122	-100.0	0.0	0.0	0.0
Pinnacle Airlines, Inc. dba Northwest Airlink	0	5,668	-5,668	-100.0	0	5,668	-5,668	-100.0	0.0	1.0	-1.0
Shuttle America Corporation	5,856	5,645	211	3.7	5,856	5,645	211	3.7	1.0	1.0	0.0
SkyWest Airlines, Inc	3,683	7,236	-3,553	-49.1	3,683	7,236	-3,553	-49.1	0.6	1.3	-0.7
Southwest Airlines	229,163	208,118	21,045	10.1	229,163	208,118	21,045	10.1	37.6	36.1	1.4
Trans States Airlines, Inc	0	16	-16	-100.0	0	16	-16	-100.0	0.0	0.0	0.0
United Airlines, Inc.	6,387	10,098	-3,711	-36.7	6,387	10,098	-3,711	-36.7	1.0	1.8	-0.7
US Airways Group, Inc.	0	1,279	-1,279	-100.0	0	1,279	-1,279	-100.0	0.0	0.2	-0.2
Vision Airlines, Inc.	256	0	256	0.0	256	0	256	0.0	0.0	0.0	0.0
Report Totals	610,026	576,157	33,869	5.9%	610,026	576,157	33,869	5.9%			

Statistics Included in Report:

Domestic Passengers:

International Passengers:

Enplaned Revenue, Deplaned Revenue, Through Revenue, Enplaned Non-Revenue, Deplaned Non-Revenue, Through Non-Revenue
 Enplaned Revenue, Deplaned Revenue, Through Revenue, Enplaned Non-Revenue, Deplaned Non-Revenue, Through Non-Revenue, South Terminal-Intl Enplaned Revenue, South Terminal-Intl Deplaned Revenue, South Terminal-Intl Through Revenue, South Terminal-Intl Enplaned Non-Revenue, South Terminal-Intl Deplaned Non-Revenue, South Terminal-Intl Through Non-Revenue

Austin-Bergstrom International Airport

Summary Landing Report

Landing Type: Total

Month	2010		2009		2008		% Change 2010 - 2009		% Change 2009 - 2008	
	Count	Weight	Count	Weight	Count	Weight	Count	Weight	Count	Weight
January	4,067	445,767,645	4,170	470,332,445	4,995	508,563,011	-2.47%	-5.22%	-16.52%	-7.52%
February			3,797	422,370,904	4,707	477,510,902			-19.33%	-11.55%
March			4,152	463,150,645	5,057	511,086,453			-17.90%	-9.38%
April			4,079	449,905,157	4,853	498,467,860			-15.95%	-9.74%
May			4,151	460,790,244	5,213	542,161,220			-20.37%	-15.01%
June			4,222	465,414,109	5,252	551,158,994			-19.61%	-15.56%
July			4,396	482,073,439	5,097	553,506,814			-13.75%	-12.91%
August			4,325	473,499,273	5,006	550,432,204			-13.60%	-13.98%
September			4,056	453,926,115	4,261	481,973,814			-4.81%	-5.82%
October			4,231	475,238,526	4,550	518,286,513			-7.01%	-8.31%
November			4,002	446,258,988	4,200	480,619,098			-4.71%	-7.15%
December			4,178	464,297,435	4,322	492,132,192			-3.33%	-5.66%
Totals for Selected Period	4,067	445,767,645	4,170	470,332,445	4,995	508,563,011	-2.47%	-5.22%	-16.52%	-7.52%
Yearly Totals	4,067	445,767,645	49,759	5,527,257,280	57,513	6,165,899,075			-13.48%	-10.36%