

Austin-Bergstrom International Airport

Aviation Activity Report

	08/2008	08/2007	Percent Change	01/2008 - 08/2008	01/2007 - 08/2007	Percent Change
<u>Passenger Activity</u>						
Domestic Enplaned Revenue	370,387	375,559	-1.38	2,929,398	2,793,220	4.88
Domestic Deplaned Revenue	393,029	392,352	0.17	2,927,986	2,806,136	4.34
Domestic Through Revenue	16,769	20,998	-20.14	136,618	152,256	-10.27
International Enplaned Revenue	1,035	1,570	-34.08	8,591	9,482	-9.40
International Deplaned Revenue	1,082	1,712	-36.80	8,835	9,690	-8.82
International Through Revenue	0	0	0.00	0	0	0.00
Domestic Enplaned Non-Revenue	11,957	11,149	7.25	83,516	84,947	-1.68
Domestic Deplaned Non-Revenue	11,463	10,720	6.93	81,109	76,764	5.66
Domestic Through Non-Revenue	0	0	0.00	0	9	-100.00
International Enplaned Non-Revenue	27	0	0.00	123	0	0.00
International Deplaned Non-Revenue	36	0	0.00	147	0	0.00
International Through Non-Revenue	0	0	0.00	0	0	0.00
South Terminal-Intl Enplaned Revenue	4,685	0	0.00	23,360	0	0.00
South Terminal-Intl Deplaned Revenue	4,957	0	0.00	23,181	0	0.00
South Terminal-Intl Through Revenue	0	0	0.00	0	0	0.00
South Terminal-Intl Enplaned Non-Revenue	0	0	0.00	0	0	0.00
South Terminal-Intl Deplaned Non-Revenue	0	0	0.00	0	0	0.00
South Terminal-Intl Through Non-Revenue	0	0	0.00	0	0	0.00
Passenger Totals	815,427	814,060	0.17	6,222,864	5,932,504	4.89

CURRENT PASSENGER RECORD = 869,308

RECORD SET = JUNE 2008

Aircraft Operations

Air Carrier	9,359	9,376	-0.18	72,412	67,925	6.61
Commuter & Air Taxi	1,974	2,736	-27.85	20,600	18,907	8.95
Military	379	490	-22.65	3,666	3,807	-3.70
General Aviation						
Itinerant	5,198	6,181	-15.90	47,570	44,721	6.37
Local	312	450	-30.67	1,951	2,869	-32.00
Total G.A.	5,510	6,631	-16.91	49,521	47,590	4.06
Total Operations	17,222	19,233	-10.46	146,199	138,229	5.77

Austin-Bergstrom International Airport

Aviation Activity Report

	08/2008	08/2007	Percent Change	01/2008 - 08/2008	01/2007 - 08/2007	Percent Change
<u>Cargo Activity</u>						
Mail						
Domestic Enplaned Mail	175,641	110,356	59.16	1,507,386	972,694	54.97
Domestic Deplaned Mail	338,673	102,786	229.49	2,872,079	1,825,542	57.33
International Enplaned Mail	0	0	0.00	0	15	-100.00
International Deplaned Mail	0	0	0.00	0	15	-100.00
South Terminal-Intl Enplaned Mail	0	0	0.00	0	0	0.00
South Terminal-Intl Deplaned Mail	0	0	0.00	0	0	0.00
Mail Totals	514,314	213,142	141.30	4,379,465	2,798,266	56.51
Cargo						
Domestic Enplaned Cargo	8,276,483	8,687,036	-4.73	65,427,289	61,108,866	7.07
Domestic Deplaned Cargo	6,729,134	7,855,915	-14.34	52,394,235	54,147,412	-3.24
International Enplaned Cargo	351,088	447,391	-21.53	3,205,217	3,258,184	-1.63
International Deplaned Cargo	0	0	0.00	0	0	0.00
South Terminal-Intl Enplaned Cargo	0	0	0.00	0	0	0.00
South Terminal-Intl Deplaned Cargo	0	0	0.00	0	0	0.00
Cargo Totals	15,356,705	16,990,342	-9.62	121,026,741	118,514,462	2.12
Belly Freight						
Domestic Enplaned Belly Freight	741,407	1,056,421	-29.82	7,755,107	9,783,081	-20.73
Domestic Deplaned Belly Freight	857,656	729,607	17.55	6,454,934	5,870,426	9.96
International Enplaned Belly Freight	0	0	0.00	0	0	0.00
International Deplaned Belly Freight	0	0	0.00	0	0	0.00
South Terminal-Intl Enplaned Belly Frt	0	0	0.00	0	0	0.00
South Terminal-Intl Deplaned Belly Frt	0	0	0.00	0	0	0.00
Belly Freight Totals	1,599,063	1,786,028	-10.47	14,210,041	15,653,507	-9.22
Cargo Totals (Mail, Cargo, Belly Freight)	17,470,082	18,989,512	-8.00	139,616,247	136,966,235	1.93

CURRENT CARGO RECORD = 40,215,518

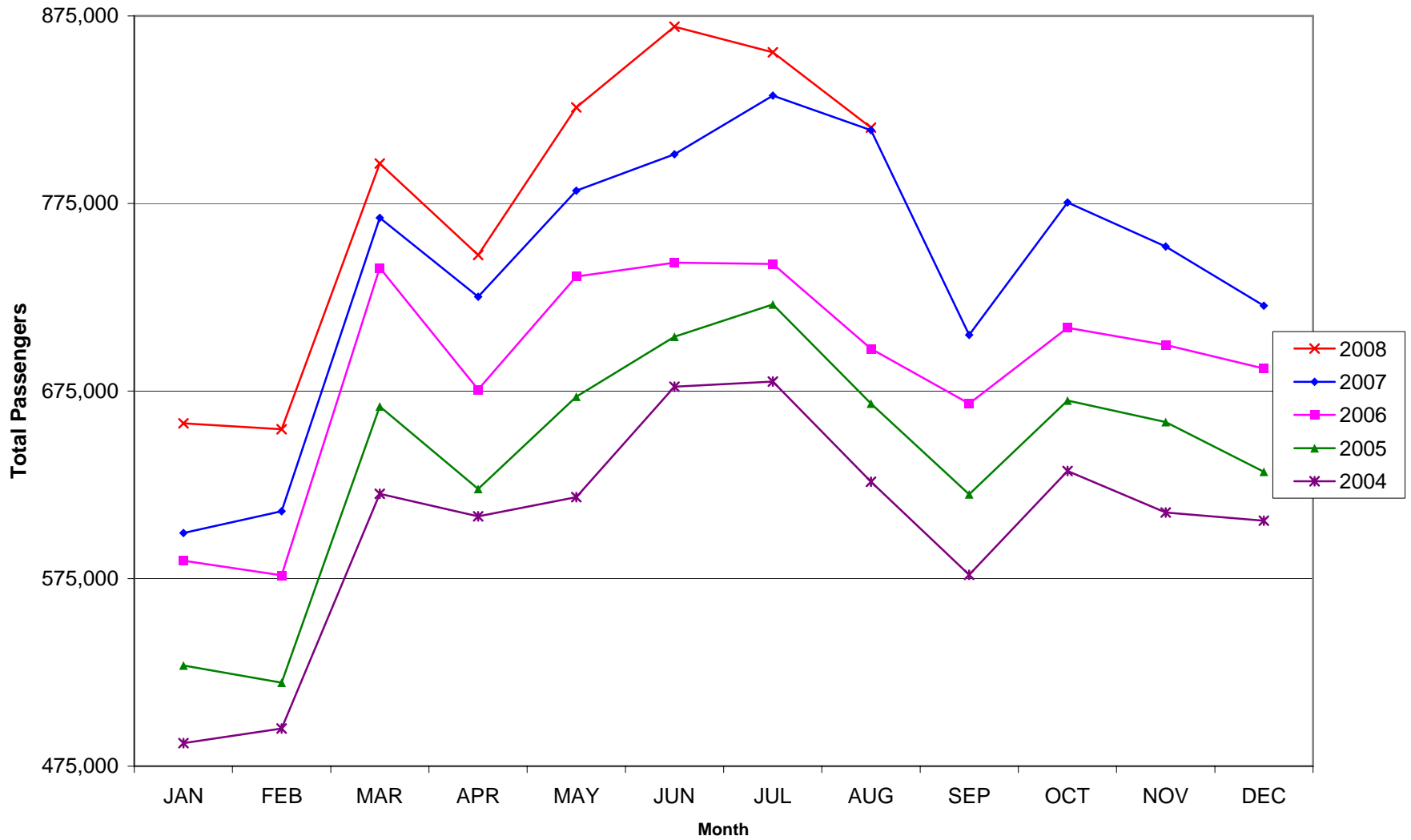
RECORD SET = MARCH 2001

AUS – Airline Codes

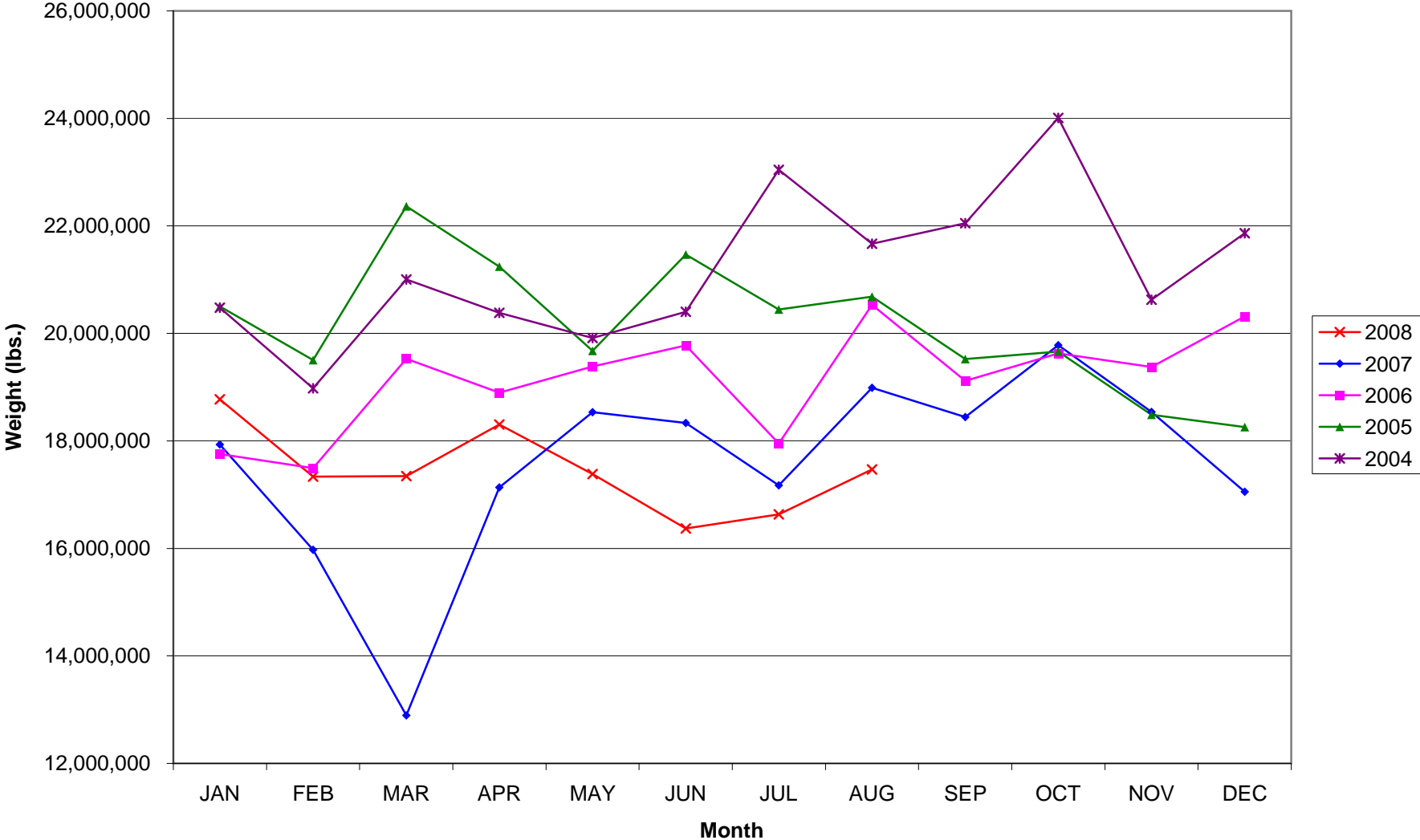
August 2008

<u>Code</u>	<u>Carrier</u>
VB	Aeroenlaces Nacionales S.A. de C.V./vivaAerobus
G4	Allegiant Air
AA	American Airlines, Inc.
EV	Atlantic Southeast Airlines, Inc. (Delta Connection)
XP	Casino Express Airways
RP	Chautauqua Airlines, Inc.
CO	Continental Airlines
DL	Delta Airlines
XE	Express Jet Airlines, Inc.
F9	Frontier Airlines DIP
QK	Jazz Air LP
B6	JetBlue Airways Corp.
YV	Mesa Airlines, Inc.
GL	Miami Air International Inc.
NW	Northwest Airlines
9E	Pinnacle Airlines, Inc. (Northwest AirlinK & Delta Connection)
S5	Shuttle America Corp. (Delta Connection)
OO	SkyWest Airlines, Inc.
WN	Southwest Airlines
AX	Trans States Airlines, Inc.
UA	United Airlines, Inc.
US	US Airways Group, Inc.

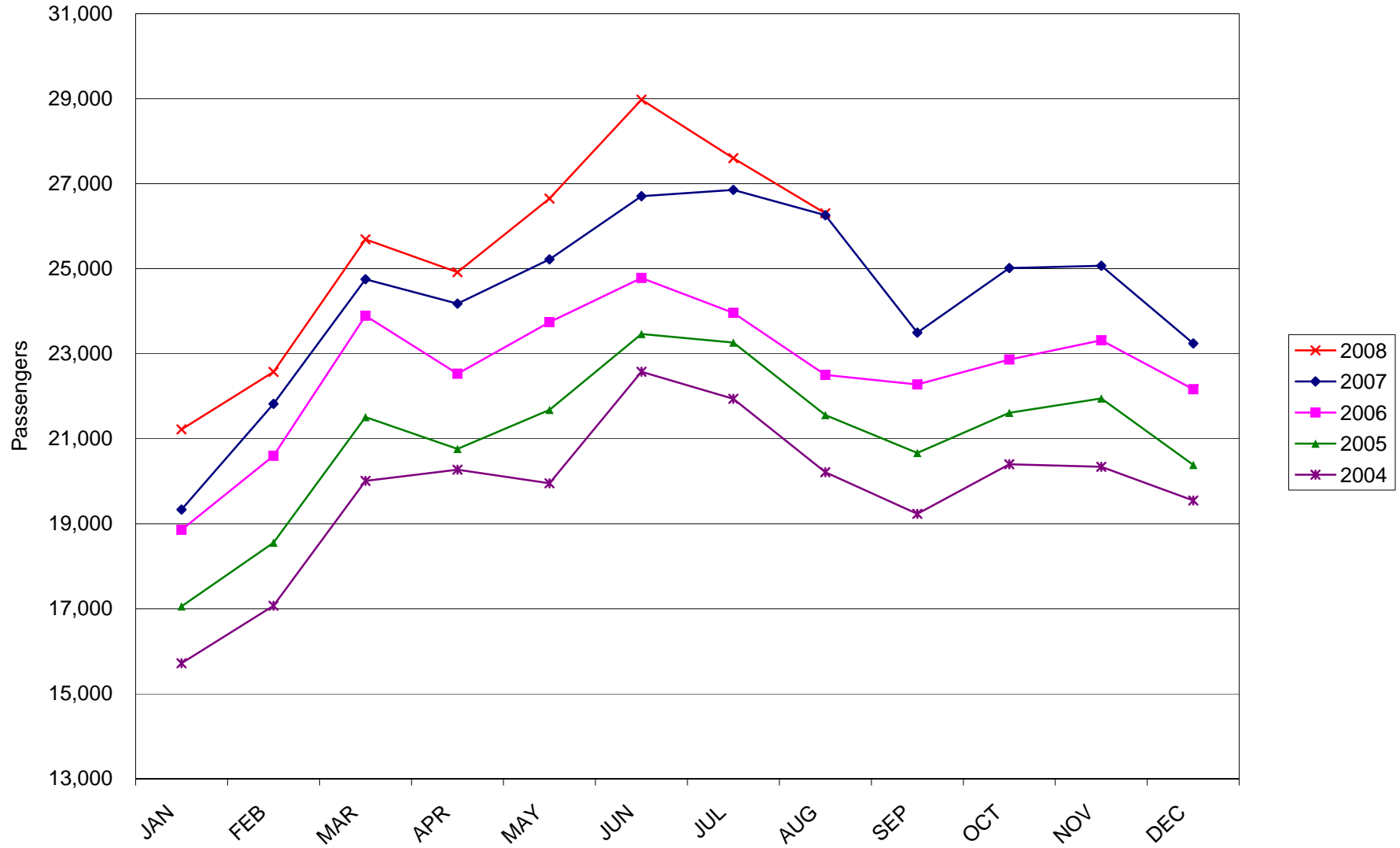
AUSTIN PASSENGER TRAFFIC



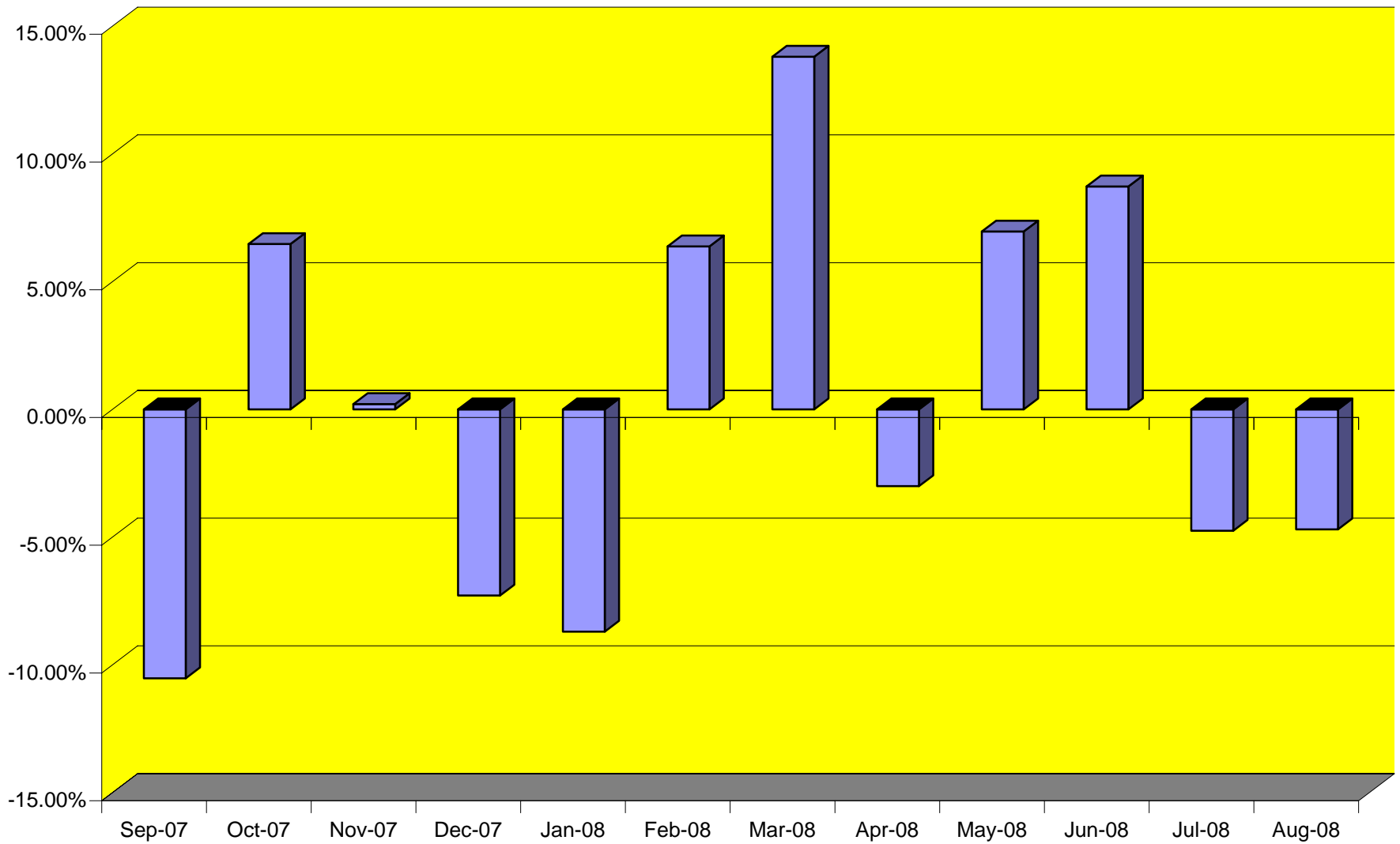
TOTAL CARGO POUNDAGE - AUSTIN, TEXAS



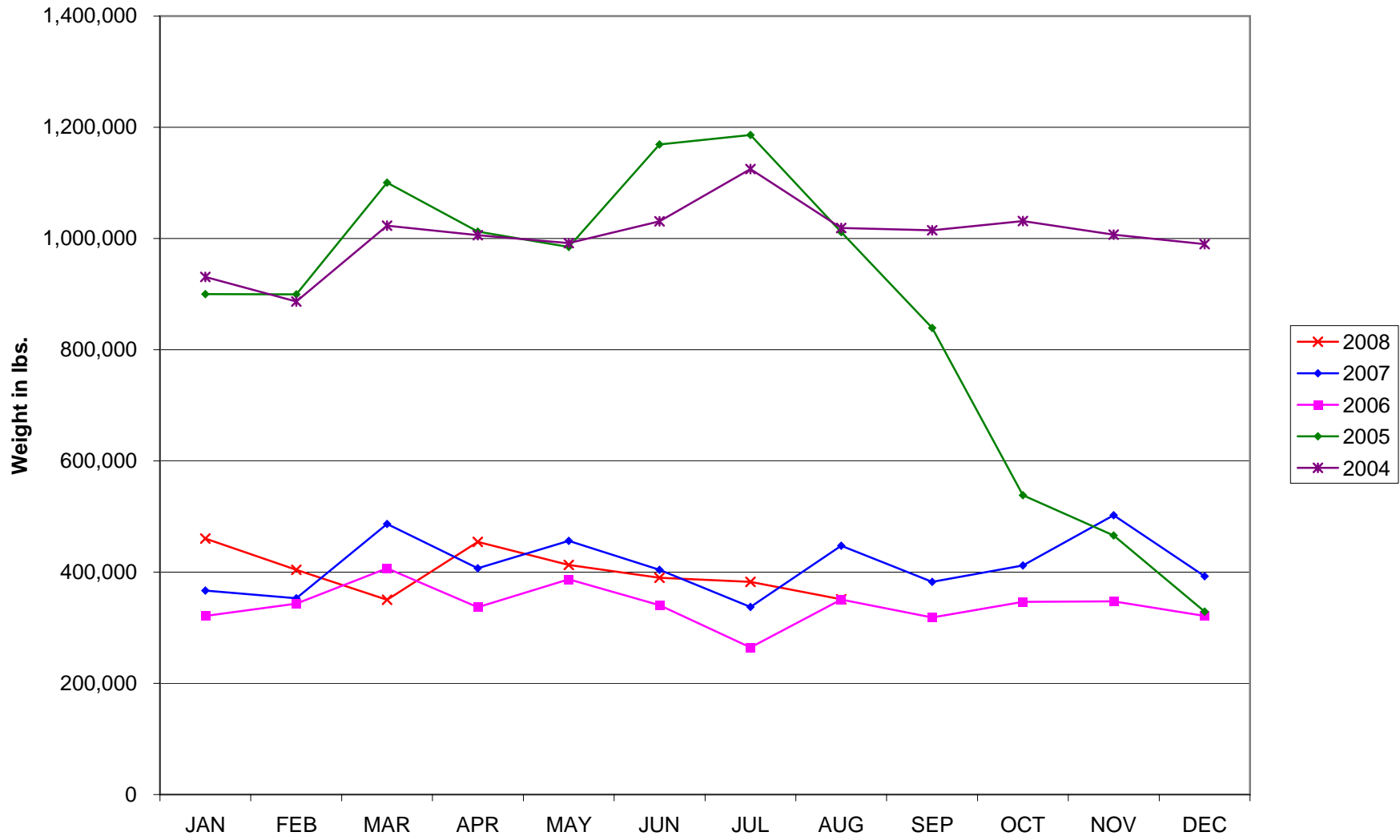
Average Daily Passengers



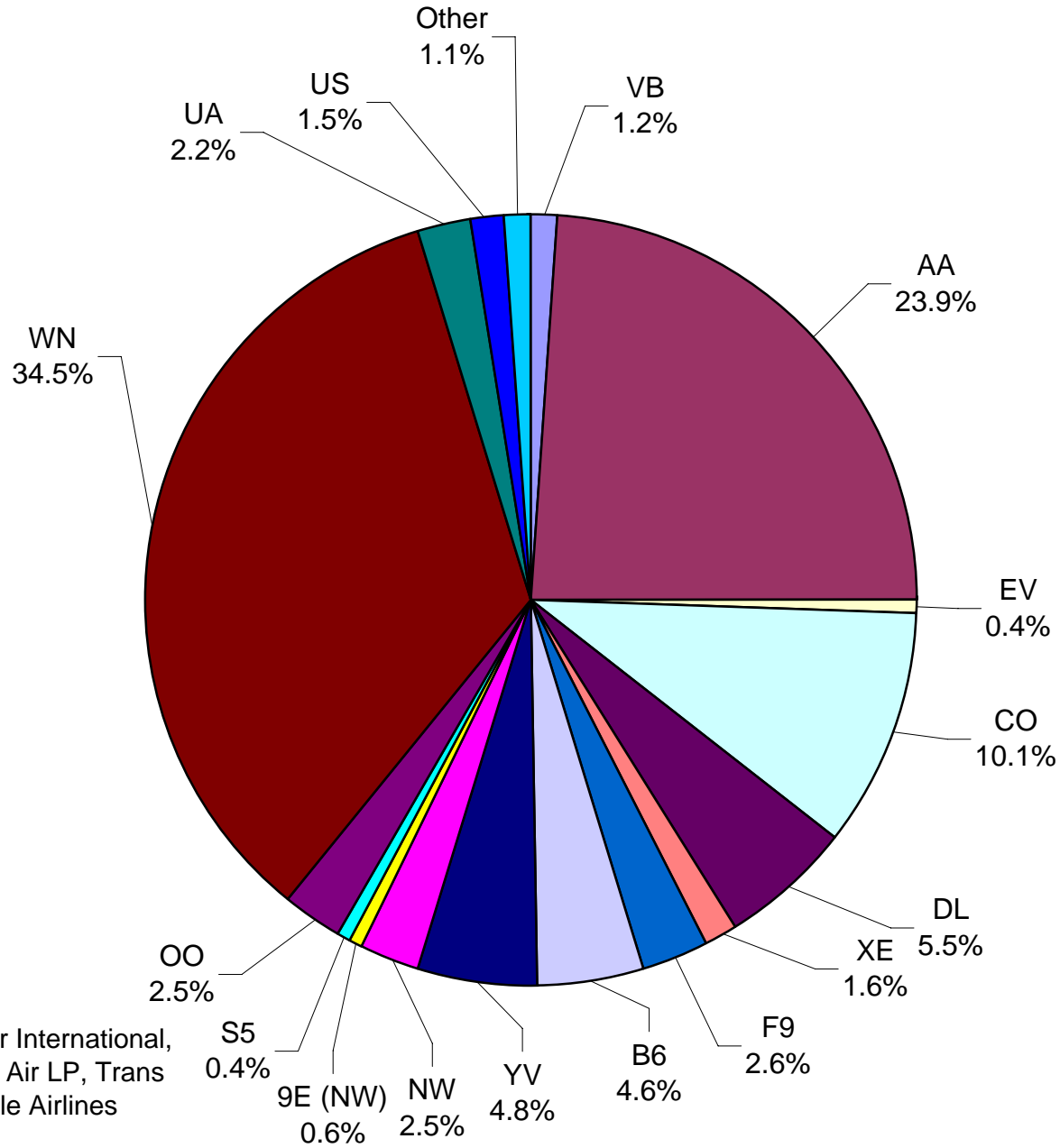
Monthly % Change in Average Daily Passengers



History of International Air Cargo



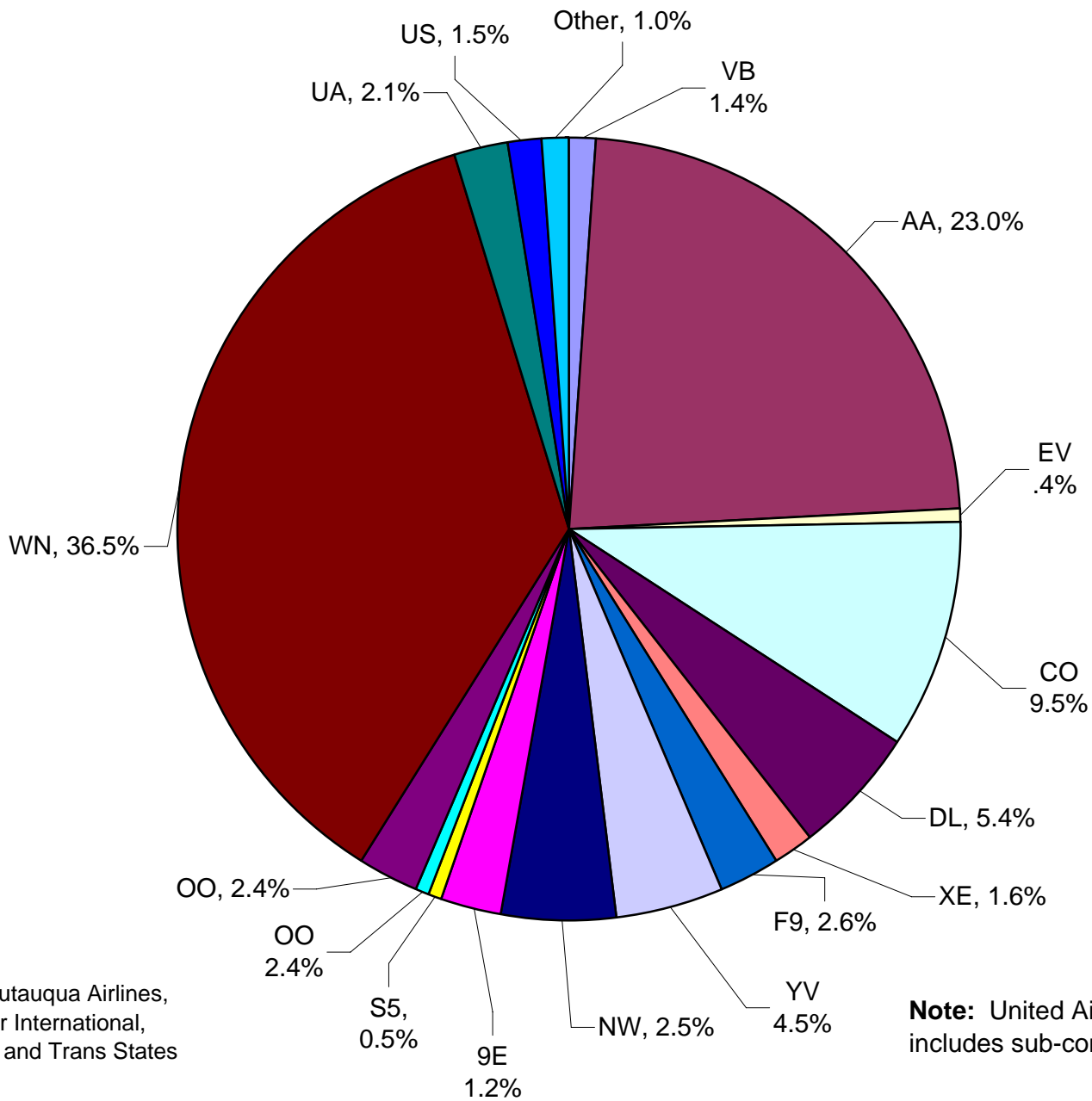
**All Carriers
Total Passengers
August 2008**



Other = Allegiant Air, Miami Air International, Chautauqua Airlines, Inc., Jazz Air LP, Trans States Airlines, Inc. and Pinnacle Airlines Inc(DL).

Note: United Airlines percentage includes sub-contractors.

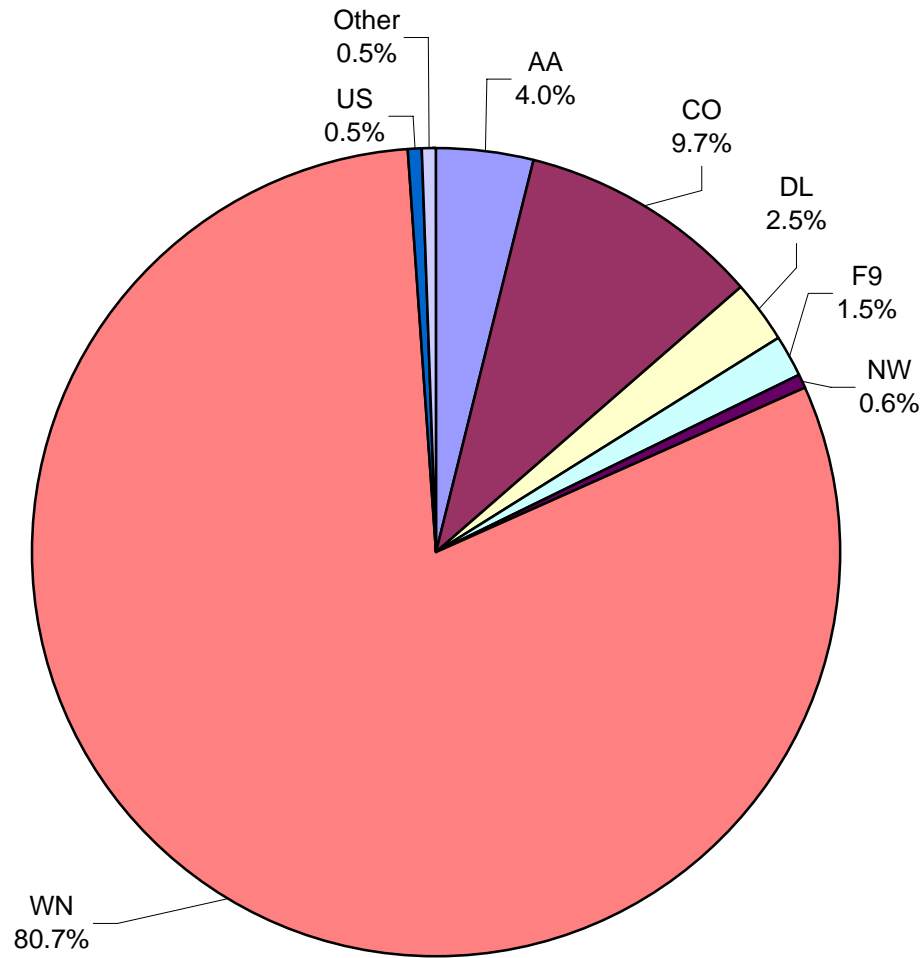
**All Passenger Carriers
Enplaned Revenue Passengers
August 2008**



Other = Allegiant Air, Chautauqua Airlines, Inc., Jazz Air LP, Miami Air International, Pinnacle Airlines Inc. (DL) and Trans States Airlines, Inc.

Note: United Airlines percentage includes sub-contractors.

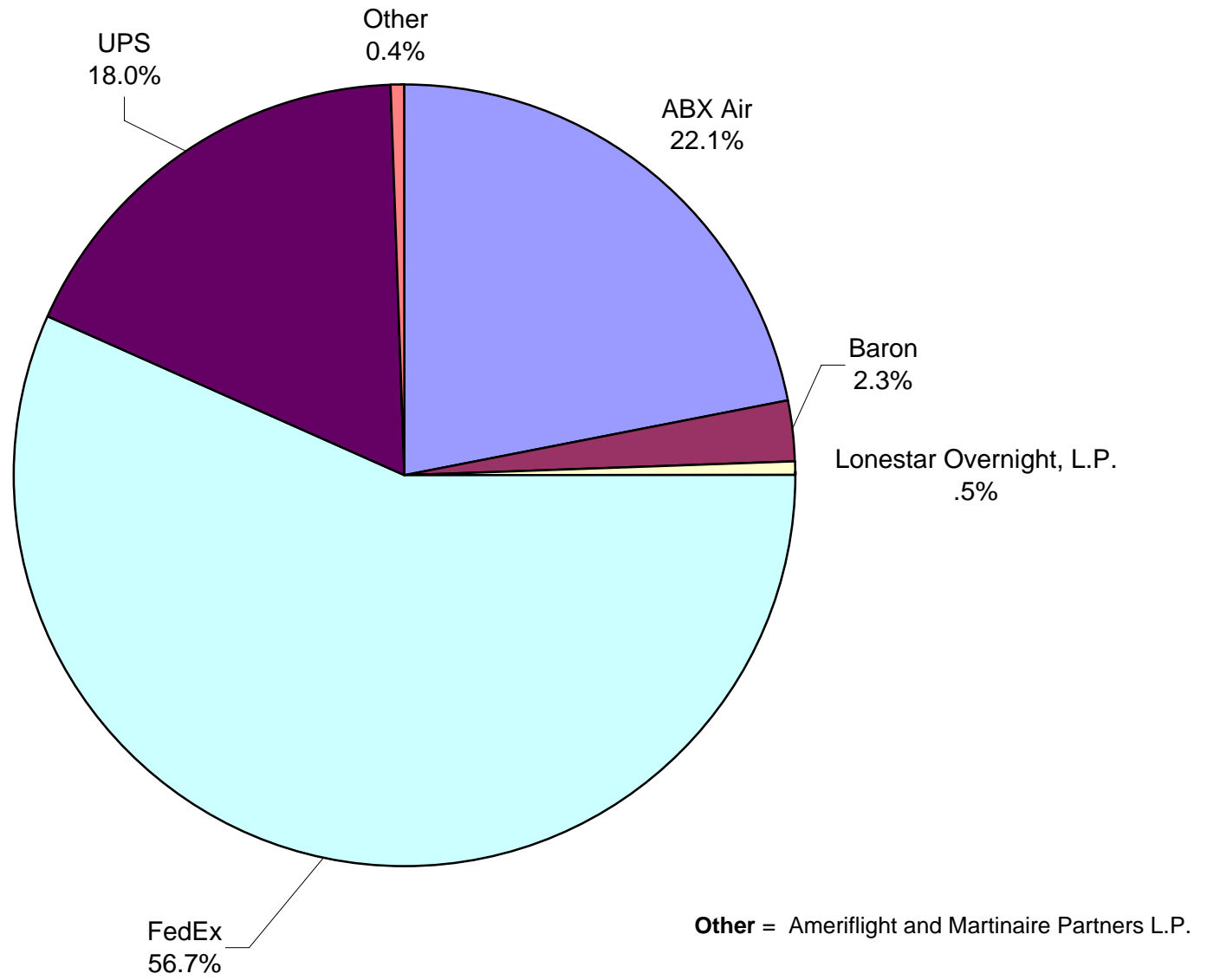
**AUS Belly Freight Market Shares
August 2008**



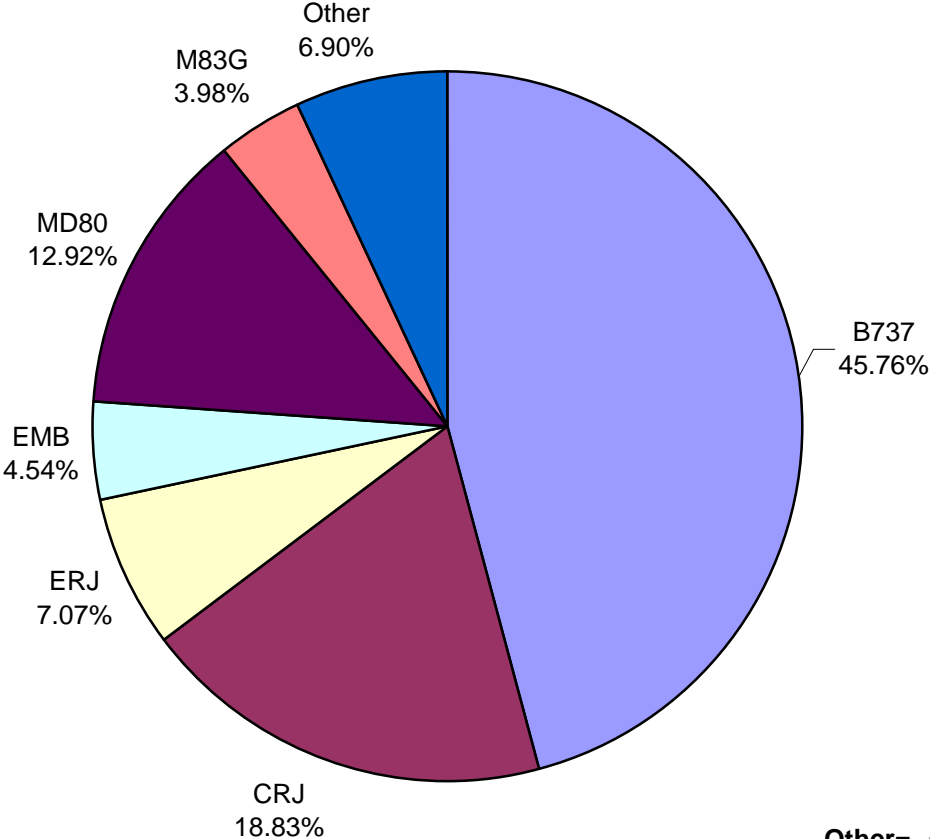
Other = Atlantic Southeast Airlines, Inc., Mesa Airlines, Inc., Pinnacle Airlines, Inc.(NW & DL) and United Airlines, Inc.

Note: United Airlines percentage includes sub-contractors.

**Air Cargo Market Shares
August 2008**

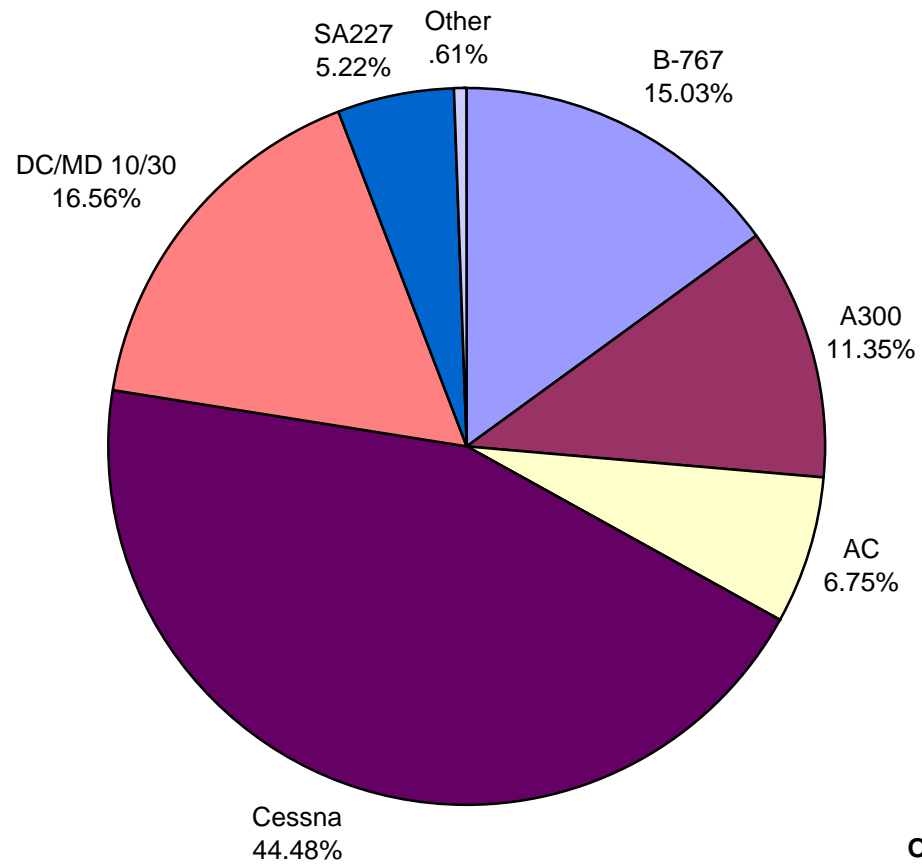


**AUS Scheduled Passenger Aircraft Fleet Mix
August 2008**



Other= A318, A319, A320, 757, 767 and MD88

**AUS Scheduled Cargo Aircraft Fleet Mix
August 2008**



Austin-Bergstrom International Airport

PAX Detail Report - August, 2008

Company	08/2008	08/2007	Period		YTD 2008	YTD 2007	YTD		2008 Share	2007 Share	Share Diff
			Difference	Change			Difference	Change			
Aero Mexico Airlines/Aerovias de Mexico, S.A. de C.V.	0	3,282	-3,282	-100.0	10,584	19,172	-8,588	-44.8	0.2	0.3	-0.2
Aeroenlaces Nacionales S.A. DE C.V./vivaAerobus	9,642	0	9,642	0.0	43,664	0	43,664	0.0	0.7	0.0	0.7
Allegiant Air	813	0	813	0.0	2,723	608	2,115	347.9	0.0	0.0	0.0
American Airlines, Inc	194,461	218,882	-24,421	-11.2	1,554,841	1,589,740	-34,899	-2.2	25.0	26.8	-1.8
Atlantic Southeast Airlines, Inc.	3,606	4,845	-1,239	-25.6	44,868	30,356	14,512	47.8	0.7	0.5	0.2
Casino Express Airways	0	292	-292	-100.0	1,347	1,184	163	13.8	0.0	0.0	0.0
Chautauqua Airlines Inc.	2,145	0	2,145	0.0	15,854	68	15,786	23,214.7	0.3	0.0	0.3
Continental Airlines	81,973	86,439	-4,466	-5.2	659,184	690,034	-30,850	-4.5	10.6	11.6	-1.0
Delta Airlines	44,473	46,958	-2,485	-5.3	317,693	316,151	1,542	0.5	5.1	5.3	-0.2
Delta Airlines/Pinnacle	638	0	638	0.0	638	0	638	0.0	0.0	0.0	0.0
Express Jet Airlines, Inc.	13,141	26,347	-13,206	-50.1	126,750	85,850	40,900	47.6	2.0	1.4	0.6
Frontier Airlines DIP	21,544	0	21,544	0.0	97,010	0	97,010	0.0	1.6	0.0	1.6
Frontier Airlines, Inc. - Pre Bankruptcy	0	22,603	-22,603	-100.0	60,210	148,934	-88,724	-59.6	1.0	2.5	-1.5
Grand Holdings, Inc DBA Champion Air	0	0	0	0.0	0	412	-412	-100.0	0.0	0.0	0.0
JAZZ Air LP	2,180	0	2,180	0.0	9,989	0	9,989	0.0	0.2	0.0	0.2
JetBlue Airways Corporation	37,364	22,865	14,499	63.4	227,291	160,510	66,781	41.6	3.7	2.7	0.9
Mesa Airlines Inc.	39,529	21,348	18,181	85.2	197,418	171,701	25,717	15.0	3.2	2.9	0.3
Miami Air International Inc.	167	0	167	0.0	509	334	175	52.4	0.0	0.0	0.0
Midwest Airlines, Inc.	0	0	0	0.0	25,331	0	25,331	0.0	0.4	0.0	0.4
MN Airlines, LLC d/b/a Sun Country	0	0	0	0.0	102	0	102	0.0	0.0	0.0	0.0
Northwest Airlines	20,624	12,527	8,097	64.6	115,635	87,863	27,772	31.6	1.9	1.5	0.4
Pace Airlines	0	0	0	0.0	40	0	40	0.0	0.0	0.0	0.0
Pinnacle Airlines, Inc. dba Northwest Airlink	4,802	8,801	-3,999	-45.4	66,212	74,142	-7,930	-10.7	1.1	1.2	-0.2
Shuttle America Corporation	3,549	17,337	-13,788	-79.5	71,359	143,252	-71,893	-50.2	1.1	2.4	-1.3
SkyWest Airlines, Inc	20,579	13,475	7,104	52.7	134,018	118,199	15,819	13.4	2.2	2.0	0.2
Southwest Airlines	281,520	267,793	13,727	5.1	2,181,055	2,020,414	160,641	8.0	35.0	34.1	1.0
Trans States Airlines, Inc	2,430	0	2,430	0.0	11,687	20,439	-8,752	-42.8	0.2	0.3	-0.2
United Airlines, Inc.	17,668	23,110	-5,442	-23.5	136,288	143,513	-7,225	-5.0	2.2	2.4	-0.2
US Airways Group, Inc.	12,579	17,156	-4,577	-26.7	110,548	109,628	920	0.8	1.8	1.8	-0.1
USA Jet Airlines, Inc.	0	0	0	0.0	16	0	16	0.0	0.0	0.0	0.0
Report Totals	815,427	814,060	1,367	0.2%	6,222,864	5,932,504	290,360	4.9%			

Statistics Included in Report:

Domestic Passengers:

International Passenger:

Enplaned Revenue, Deplaned Revenue, Through Revenue, Enplaned Non-Revenue, Deplaned Non-Revenue, Through Non-Revenue

Enplaned Revenue, Deplaned Revenue, Through Revenue, Enplaned Non-Revenue, Deplaned Non-Revenue, Through Non-Revenue, South Terminal-Int'l Enplaned Revenue, South Terminal-Int'l Deplaned Revenue, South Terminal-Int'l Through Revenue, South Terminal-Int'l Enplaned Non-Revenue, South Terminal-Int'l Deplaned Non-Revenue, South Terminal-Int'l Through Non-Revenue

Austin-Bergstrom International Airport

Summary Landing Report

Landing Type: Total

Month	2008		2007		2006		% Change 2008 - 2007		% Change 2007 - 2006	
	Count	Weight	Count	Weight	Count	Weight	Count	Weight	Count	Weight
January	4,994	508,546,911	4,268	461,157,264	4,314	454,270,179	17.01%	10.28%	-1.07%	1.52%
February	4,707	477,510,902	4,081	432,333,052	4,039	431,045,336	15.34%	10.45%	1.04%	0.30%
March	5,057	511,086,453	4,693	498,304,509	4,750	489,668,305	7.76%	2.57%	-1.20%	1.76%
April	4,853	498,467,860	4,657	485,905,500	4,513	460,099,145	4.21%	2.59%	3.19%	5.61%
May	5,213	542,161,220	5,116	524,923,078	4,697	488,433,026	1.90%	3.28%	8.92%	7.47%
June	5,252	551,158,994	5,005	521,795,072	4,602	473,433,518	4.94%	5.63%	8.76%	10.22%
July	5,097	553,506,814	5,243	543,571,241	4,597	474,383,579	-2.78%	1.83%	14.05%	14.58%
August	5,006	550,514,204	5,452	559,875,138	4,699	487,707,507	-8.20%	-1.69%	16.02%	14.80%
September			5,105	513,849,856	4,463	468,374,570			14.38%	9.71%
October			5,373	539,788,979	4,743	495,762,514			13.28%	8.88%
November			5,052	515,328,663	4,487	476,027,737			12.59%	8.26%
December			4,997	511,272,858	4,596	484,901,631			8.72%	5.44%
Totals for Selected Period	40,179	4,192,953,358	38,515	4,027,864,854	36,211	3,759,040,595	4.32%	4.10%	6.36%	7.15%
Yearly Totals	40,179	4,192,953,358	59,042	6,108,105,210	54,500	5,684,107,047			8.33%	7.46%